

# IDC BOND CLAMP ENCLOSURE

## FIBER OPTIC CABLE CONNECTOR ENCLOSURE

Extend the longevity of IDC Bond Clamp and cable through the utilization of an enclosure. Enclosures are suitable for use with the IDC Bond Clamp's and encapsulate it within a dielectric gel, decreasing probability of water and moisture from degrading connectivity and building up within the cable sheath. Increase the longevity of your network infrastructure in spite of harsh and inclement weather with the IDC Bond Clamp and enclosure.

### FEATURES AND BENEFITS

- Dielectric gel filled for waterproofing.
- Impact resistant for direct burial
- Suitable for use with cables utilizing the IDC Bond Clamp - Medium (.48"-.79") and Large (.80"-1.3").

### ORDERING INFORMATION

**IDC Bond Clamp Enclosure - Medium**  
Part Number: EM-4879-C

**IDC Bond Clamp Enclosure - Large**  
Part Number: EM-80130-C

### IDC Bond Clamp Kit (Clamp & Enclosure)

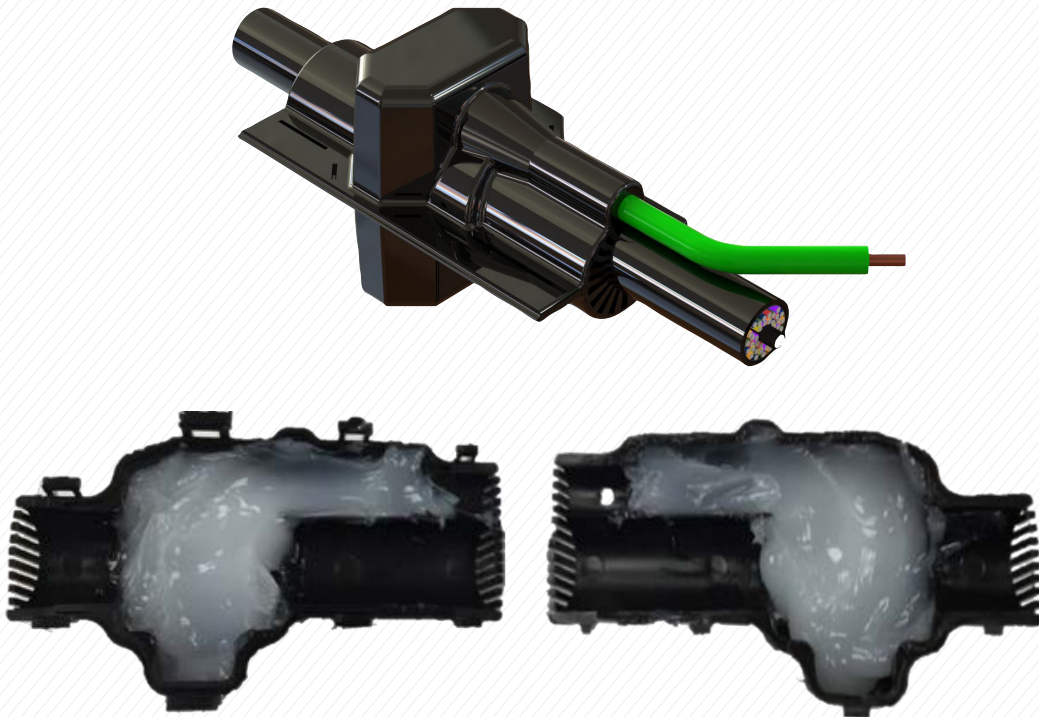
Medium - Part Number: EM-4879-ALT-XX-C

Large - Part Number: EM-80130-XX-C

\*XX = Options for stainless steel screws:

**PS** = #2 Phillips head screw

**RS** = #2 Robertson square drive screw



hubbellpowersystems.com

For product inquiries, please contact your local sales representative or customer service representative.

©2019 Hubbell Incorporated.  
Because Hubbell has a policy of continuous product improvement, we reserve the right to change design and specifications without notice.  
Printed in the U.S.A. | SF\_12\_054E